

Centre Number						Candidate Number				
Surname										
Other Names										
Candidate Signature										



General Certificate of Secondary Education
Higher Tier
June 2011

Geography (Specification A)

Unit 1 Physical Geography

Monday 13 June 2011 9.00 am to 10.30 am

40301H

H

For Examiner's Use	
Examiner's Initials	
Question	Mark
1	
2	
3	
4	
5	
6	
7	
TOTAL	

For this paper you must have:

- the colour insert
 - pencil
 - rubber
 - ruler.
- You may use a calculator.

Time allowed

- 1 hour 30 minutes

Instructions

- Use black ink or black ball-point pen.
- Fill in the boxes at the top of this page.
- Answer **three** questions.
- Answer **one** question from **Section A** and **one** question from **Section B**, and **one** other question from **either** Section A **or** Section B.
- You must answer the questions in the spaces provided. Do not write outside the box around each page or on blank pages.
- Do all rough work in this book. Cross through any work you do not want to be marked.
- Use case studies to support your answers where appropriate.

Information

- The marks for questions are shown in brackets.
- The maximum mark for this paper is 75.
- You will be marked on your ability to:
 - use good English
 - organise information clearly
 - use specialist vocabulary where appropriate.

Advice

- Where appropriate, credit will be given for the use of diagrams to illustrate answers and where reference is made to your personal investigative work. You are advised to allocate your time carefully.



J U N 1 1 4 0 3 0 1 H 0 1

G/T63850 6/6/6/

40301H

Section A

Answer **one** question from Section A and **one** question from Section B and **one** other question from **either** Section A **or** Section B.

Use case studies to support your answers where appropriate.

Total for this question: 25 marks

1 The Restless Earth

1 (a) Give **two** differences between continental crust and oceanic crust.

.....

.....

.....

.....

(2 marks)

1 (b) (i) Study **Figure 1** on the insert, a photograph of Mount Vesuvius, a volcano in Italy. Draw a labelled sketch of **Figure 1** to show the characteristics of this volcano.

(3 marks)



1 (b) (ii) Explain how volcanoes form at constructive plate margins.

.....

.....

.....

.....

.....

.....

.....

.....

(4 marks)

Extra space

.....

.....

.....

1 (c) (i) Describe the size and shape of a supervolcano

.....

.....

.....

.....

(2 marks)

Question 1 continues on the next page

Turn over ►



1 (c) (ii) Describe the likely worldwide effects of a supervolcano eruption.

.....

.....

.....

.....

.....

.....

.....

.....

.....

.....

.....

.....

.....

.....

(6 marks)

Extra space

.....

.....

.....

.....

.....

1 (d) Study **Figure 2** on the insert, photographs of how people use fold mountains. With the help of **Figure 2** and a case study of a fold mountain range, describe how people use fold mountains.

.....

.....

.....

.....

.....

.....



.....

.....

.....

.....

.....

.....

.....

.....

.....

.....

.....

(8 marks)

Extra space

.....

.....

.....

.....

.....

25

Turn over for the next question

Turn over ►



Total for this question: 25 marks**2 Rocks, Resources and Scenery****2 (a)** Give **two** characteristics of igneous rock.

.....

.....

.....

.....

*(2 marks)***2 (b) (i)** Study **Figure 3** on the insert, which shows part of the rock cycle.

Describe the processes which lead to the formation of sedimentary rock.

.....

.....

.....

.....

.....

.....

*(3 marks)***2 (b) (ii)** What is 'weathering'?

.....

.....

.....

.....

(2 marks)

2 (b) (iii) Draw a labelled diagram(s) to explain how exfoliation occurs.



(4 marks)

Question 2 continues on the next page

Turn over ►



Study **Figure 4** on the insert, a photograph of Hay Tor on Dartmoor, Devon. Describe the granite tor shown and explain its formation.

This image shows a full page of white paper with ten horizontal dashed lines, evenly spaced from top to bottom. The lines are thin and black, typical of handwriting practice paper. There are no margins, text, or other markings on the page.

Extra space

Different rocks create contrasting landscapes.
Using **one or more** rock types you have studied, describe the benefits of using the landscape for economic activity.

.....

.....

.....

.....

.....



.....

.....

.....

.....

.....

.....

.....

.....

.....

.....

.....

.....

(8 marks)

Extra space

.....

.....

.....

.....

.....

25

Turn over for the next question

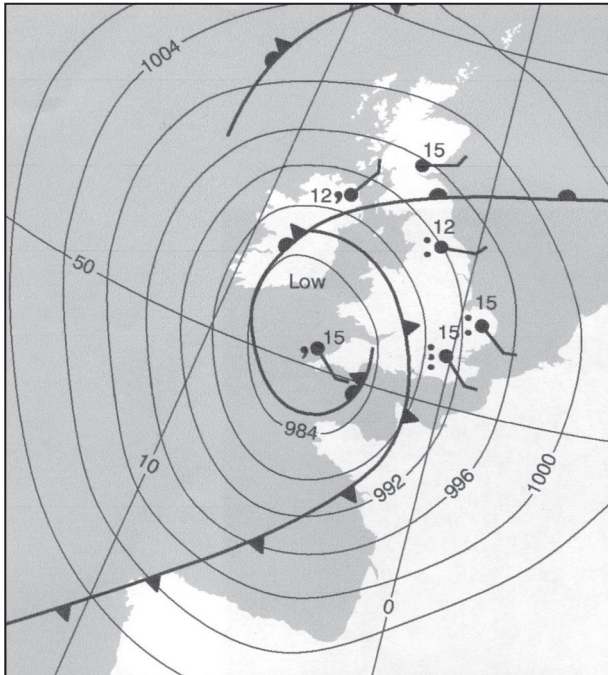
Turn over ►



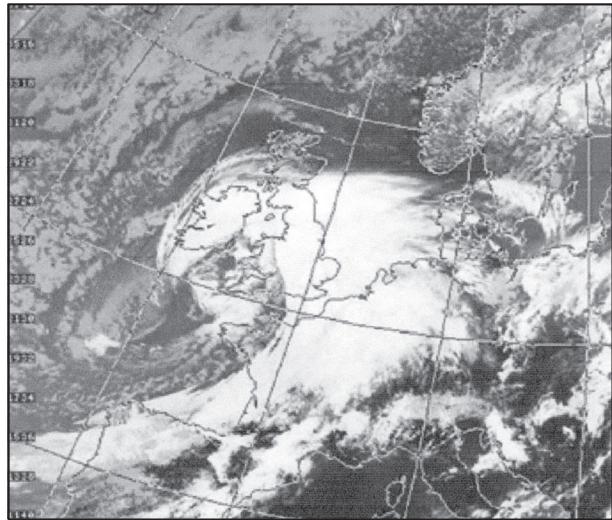
Total for this question: 25 marks

3 The Challenge of Weather and Climate

- 3 (a)** Study **Figures 5a** and **5b** which show a synoptic chart and a satellite image for midday on 5 September 2008.

Figure 5a**Key**

- Sky $\frac{8}{8}$ covered by cloud
- ↖ Wind direction (north west shown)
- ↖ Wind speed (8–12 knots, force 3)
- Drizzle
- Rain

Figure 5b

- 3 (a) (i)** Using information from **Figure 5a**, label **three** features of the weather system on **Figure 5b**.

(3 marks)

- 3 (a) (ii)** The weather system shown is a depression.
How does the pattern of isobars shown in **Figure 5a** suggest this?

.....

.....

.....

.....

(2 marks)



3 (b) Explain why the weather changes with the passage of a depression.

.....

.....

.....

.....

.....

.....

.....

.....

.....

.....

.....

.....

.....

.....

(6 marks)

Extra space

.....

.....

.....

.....

Question 3 continues on the next page

Turn over ►



- 3 (c) (i)** Study **Figure 6** on the insert, which shows predicted global, Northern hemisphere and Southern hemisphere temperature change from 2000 to 2100. Describe the trends shown by the graph.

.....

.....

.....

.....

.....

.....

.....

.....

(4 marks)

Extra space

.....

.....

.....

- 3 (c) (ii)** Outline **one** possible cause of global climate change.

.....

.....

.....

.....

(2 marks)



This image shows a full page of white paper with horizontal dashed lines, typical of primary school handwriting practice paper. The lines are evenly spaced and run across the entire width of the page. There are no margins, text, or other markings present.

Extra space

25

Total for this question: 25 marks**4 Living World****4 (a) (i)** What is an 'ecosystem'?

.....

.....

.....

.....

*(2 marks)***4 (a) (ii)** Study **Figure 7** on the insert, which shows the distribution of the hot desert ecosystem. Describe the distribution of the hot desert ecosystem.

.....

.....

.....

.....

.....

.....

*(3 marks)***4 (b) (i)** Study **Figure 8** on the insert, photographs which show vegetation in a hot desert. Describe the characteristics of the vegetation shown in **Figure 8**.

.....

.....

.....

.....

.....

.....

.....

.....

.....

(4 marks)

.....

.....

.....

[illegible]

.....

.....

.....

.....

Turn over ►



4 (c) (i) Outline **one** cause of tropical rainforest deforestation.

.....

.....

.....

.....

(2 marks)

4 (c) (ii) Using a case study of a tropical rainforest, describe the effects of deforestation.

.....

.....

.....

.....

.....

.....

.....

.....

.....

.....

.....

.....

.....

.....

.....

.....

.....

.....

.....

.....

.....

(8 marks)



Extra space

.....

.....

.....

.....

.....

25

End of Section A

Turn over for Section B

Turn over ►



Section B

Answer **one** question from Section A and **one** question from Section B, and **one** other question from **either** Section A **or** Section B.

Use case studies to support your answers where appropriate.

Total for this question: 25 marks

5 Water on the Land

5 (a) Describe how a river erodes.

.....

.....

.....

.....

.....

.....

(3 marks)



- 5 (b) (i)** Study **Figure 9** on the insert, a photograph of the River Tees in its middle course. **Figure 10** is a black and white copy of **Figure 9**. Label **Figure 10** to show **three** characteristics of the channel and the valley.

Figure 10



(3 marks)

Question 5 continues on the next page

Turn over ►



- 5 (b) (ii)** Draw a labelled cross-section to show how the inside bend of a meander is different from the outside bend of a meander.



(4 marks)

- 5 (b) (iii)** Explain the formation of an ox-bow lake.

.....

.....

.....

.....

.....

.....

.....

.....

(4 marks)

Extra space

.....

.....

.....



5 (c) (i) Study **Figure 11**, newspaper cuttings about the causes of flooding.

Figure 11



Use **Figure 11** to explain why rivers flood.

.....

.....

.....

.....

.....

.....

(3 marks)

Question 5 continues on the next page

Turn over ►



Chosen strategy

Extra space



Total for this question: 25 marks

6 Ice on the Land**6 (a) (i)** Describe the features of the glacial budget.

.....

.....

.....

.....

.....

.....

(3 marks)

6 (a) (ii) Study **Figure 12** on the insert, a map of the Athabasca Glacier in Canada. Describe the changes in the Athabasca Glacier shown in **Figure 12**.

.....

.....

.....

.....

.....

.....

(3 marks)

Question 6 continues on the next page

Turn over ►



6 (a) (iii) Suggest reasons for the retreat of the glacier shown in **Figure 12**.

.....

.....

.....

.....

.....

.....

.....

.....

(4 marks)

Extra space

.....

.....

.....

6 (b) Study **Figure 13** on the insert, a photograph of the Athabasca Glacier in Canada. Describe the characteristics of the glacier shown in **Figure 13**.

.....

.....

.....

.....

.....

.....

(3 marks)



6 (c) Explain the formation of a glacial trough.

.....

.....

.....

.....

.....

.....

.....

.....

(4 marks)

Extra space

.....

.....

.....

Question 6 continues on the next page

Turn over ►



- 6 (d)** Avalanches are a hazard affecting Alpine areas.
Explain why avalanches occur.

.....

.....

.....

.....

.....

.....

.....

.....

.....

.....

.....

.....

.....

.....

.....

.....

.....

.....

.....

.....

.....

(8 marks)

Extra space

.....

.....

.....

.....

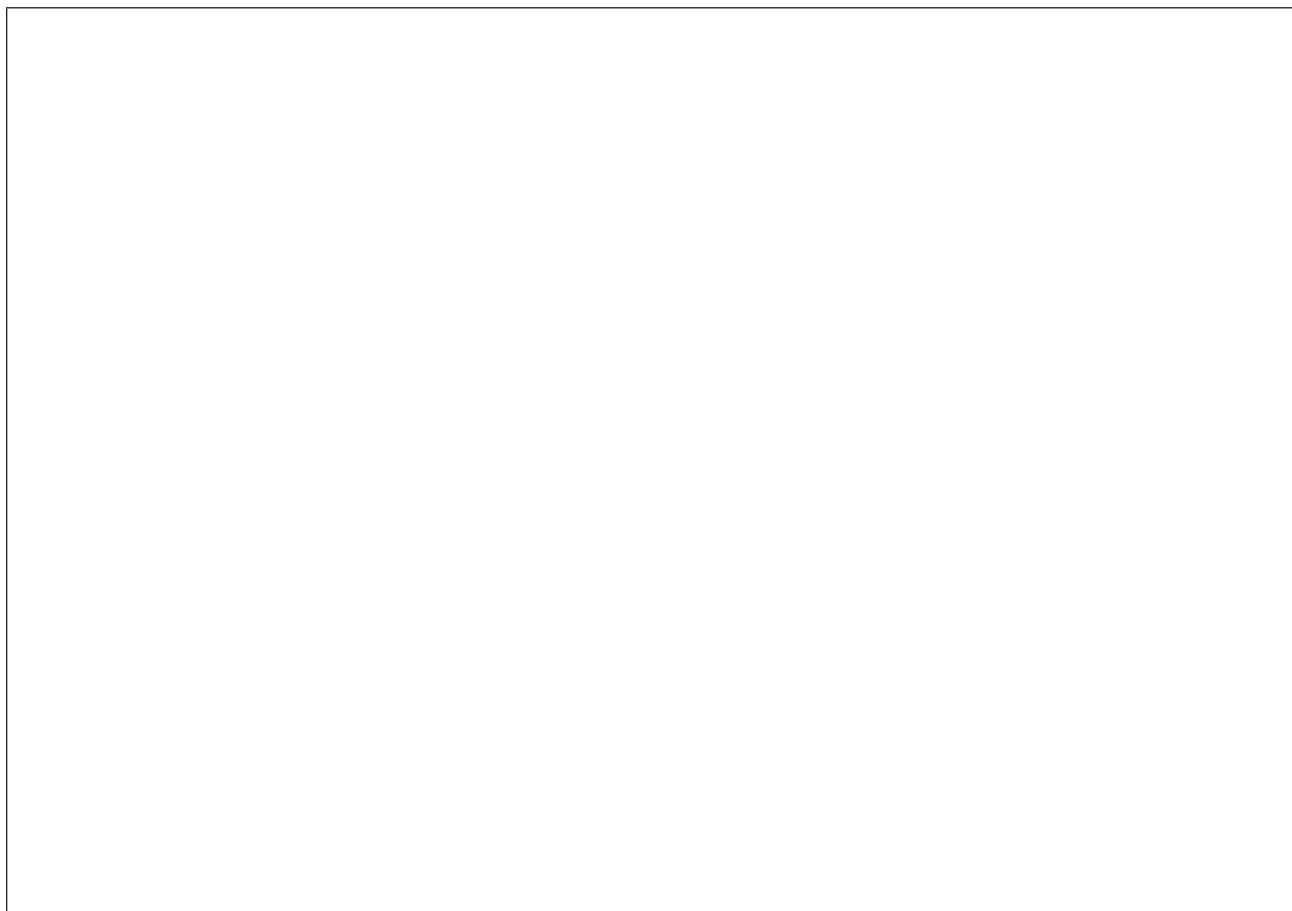
.....

.....

.....

.....



Total for this question: 25 marks**7 The Coastal Zone****7 (a) (i)** Draw a labelled diagram to show the process of longshore drift.*(3 marks)***7 (a) (ii)** Explain why deposition occurs at certain places along the coast.

.....

.....

.....

.....

.....

.....

*(3 marks)***Question 7 continues on the next page****Turn over ►**

- 7 (b) (i)** Study **Figure 14** on the insert, a photograph of part of the UK coastline. Describe the landforms shown in **Figure 14**.

.....

.....

.....

.....

.....

.....

(3 marks)

- 7 (b) (ii)** Explain the formation of headlands and bays.

.....

.....

.....

.....

.....

.....

.....

.....

(4 marks)

Extra space

.....

.....

.....



- 7 (c)** Using a case study, discuss the effects of cliff collapse on people's lives and the environment.

.....

.....

.....

.....

.....

.....

.....

.....

.....

.....

.....

.....

.....

.....

.....

.....

.....

.....

.....

.....

.....

(8 marks)

Extra space

.....

.....

.....

.....

.....

.....

.....

Question 7 continues on the next page

Turn over ►



- 7 (d)** Study **Figure 15** on the insert, which shows coastal management along the Holderness coastline.
Explain the predicted changes to the coastline.

.....

.....

.....

.....

.....

.....

.....

.....

(4 marks)

Extra space

.....

.....

.....

25

END OF QUESTIONS



There are no questions printed on this page

**DO NOT WRITE ON THIS PAGE
ANSWER IN THE SPACES PROVIDED**



There are no questions printed on this page

**DO NOT WRITE ON THIS PAGE
ANSWER IN THE SPACES PROVIDED**

ACKNOWLEDGEMENT OF COPYRIGHT-HOLDERS AND PUBLISHERS

Permission to reproduce all copyright material has been applied for. In some cases, efforts to contact copyright-holders have been unsuccessful and AQA will be happy to rectify any omissions of acknowledgements in future papers if notified.

Figure 5a: © Crown Copyright 2008, the Met Office

Figure 5b: © NEODAAS/University of Dundee

Copyright © 2011 AQA and its licensors. All rights reserved.

